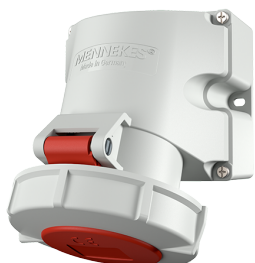


Wall mounted socket

Part no. 9382

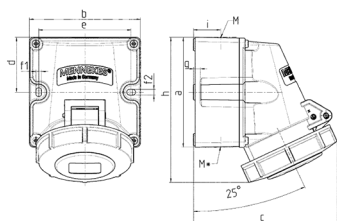


- screw terminals
- highly resistant to chemicals
- with 2 external fixing points
- enclosure base can be turned 180°
- sockets are designed for adding an auxiliary contact switch

Technical specifications

Ampere	32 A
Poles	5 p
Voltage	400 V
Clock position	6 h
Hertz	50-60 Hz
Connection technology	Screw terminals
Contact	standard
Protection type	IP67
Enclosure material	Plastic, high resistance to chemicals / AMELAN
Weight	566 g
Certifications	VDE

Drawing



Drawing 1 MB 622	Amp. Poles	16			32		
		3	4	5	3	4	5
Dim. in mm							
a		100	100	100	100	100	100
b		101	101	101	109	109	109
c		117	125	131	157	157	160
d		50	50	50	50	50	50
e		84	84	84	92	92	92
f1		5.3	5.3	5.3	5.3	5.3	5.3
f2		5.3	5.3	5.3	5.3	5.3	5.3
g		6.5	6.5	6.5	6.5	6.5	6.5
h		131	131	132	148	148	148
i		24.7	24.7	24.7	27.5	27.5	27.5
M		25 (optional M20)			32 (optional M25)		
M*		2x25 (blind) to be cut out			2x25 (blind) to be cut out		
Max. cable diam. (mm)		18 (M25) and 15 (M20)			25 (M32) and 18 (M25)		
Terminal for cond. cross section (mm²) min.-max.		1.5	1.5	1.5	2.5	2.5	2.5
		-4	-4	-4	-6	-6	-6