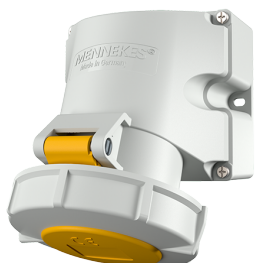


## Wall mounted socket

Part no. 9350

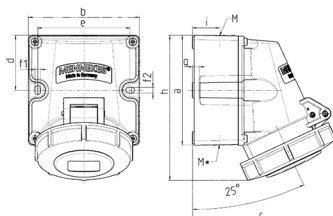


- screw terminals
- highly resistant to chemicals
- with 2 external fixing points
- enclosure base can be turned 180°
- sockets are designed for adding an auxiliary contact switch

## Technical specifications

|                       |  |
|-----------------------|--|
| Ampere                | 32 A   |
| Poles                 | 3 p  |
| Voltage               | 110 V  |
| Clock position        | 4 h  |
| Hertz                 | 50-60 Hz                                       |
| Connection technology | Screw terminals                                |
| Contact               | standard                                       |
| Protection type       | IP67   |
| Enclosure material    | Plastic, high resistance to chemicals / AMELAN |
| Weight                | 512 g  |

## Drawing



| Drawing<br>1 MB 622                              | Amp.<br>Poles         | 16                         |      |      | 32                         |      |      |
|--|-----------------------|----------------------------|------|------|----------------------------|------|------|
|  |                       | 3                          | 4    | 5    | 3                          | 4    | 5    |
| Dim. in mm                                       | a                     | 100                        | 100  | 100  | 100                        | 100  | 100  |
|  | b                     | 101                        | 101  | 101  | 109                        | 109  | 109  |
|  | c                     | 117                        | 125  | 131  | 157                        | 157  | 160  |
|  | d                     | 50                         | 50   | 50   | 50                         | 50   | 50   |
|  | e                     | 84                         | 84   | 84   | 92                         | 92   | 92   |
|  | f1                    | 5.3                        | 5.3  | 5.3  | 5.3                        | 5.3  | 5.3  |
|  | f2                    | 5.3                        | 5.3  | 5.3  | 5.3                        | 5.3  | 5.3  |
|  | g                     | 6.5                        | 6.5  | 6.5  | 6.5                        | 6.5  | 6.5  |
|  | h                     | 131                        | 131  | 132  | 148                        | 148  | 148  |
|  | i                     | 24.7                       | 24.7 | 24.7 | 27.5                       | 27.5 | 27.5 |
|  | M                     | 25 (optional M20)          |      |      | 32 (optional M25)          |      |      |
|  | M*                    | 2x25 (blind) to be cut out |      |      | 2x25 (blind) to be cut out |      |      |
|  | Max. cable diam. (mm) | 18 (M25) and 15 (M20)      |      |      | 25 (M32) and 18 (M25)      |      |      |
| Terminal for cond. cross section (mm²) min.-max. | 1.5                   | 1.5                        | 1.5  | 2.5  | 2.5                        | 2.5  |      |
|  | -4                    | -4                         | -4   | -6   | -6                         | -6   |      |