

Panel mounted socket

Part no. 1456

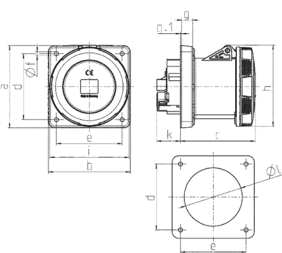


- screw terminals
- X-CONTACT®
- straight
- products with pilot contact on request

Technical specifications

Ampere	125 A
Poles	4 p
Voltage	230 V
Clock position	9 h
Hertz	60-50 Hz
Connection technology	Screw terminals
Contact	X-CONTACT
Protection type	IP67
Flange	130x130 mm
Fixing hole	104x104 mm
Weight	1135 g
Certifications	VDE

Drawing



Drawing 1 MB 258	Amp. Poles	125	
		4	5
Dim. in mm	a	130	130
	b	130	130
	c	119	119
	d	104	104
	e	104	104
	f	6.5	6.5
	g	18	18
	g.1	2	2
	h	129	129
	i	126	126
	k	43	43
	l	98	98
Terminal for cond. cross section (mm ²) min.-max.		25	25
		-70	-70